



## They answered

**A.1.** I have been involved in the breed for close to 20 years. Growing up, the look of a Pug had always appealed to me (we had Pomeranians and Dobermans) and I bought my first Pug in my late teens after moving out and getting my own place. I started showing them in my early twenties, and one Pug soon turned to two and then three, and in time a



few more!

They have the most wicked personalities, with no two alike. They make me smile everyday and I would never be without a Pug

**A.2.** Pugs have always been a strong breed in Australia. Like all things, styles and personal preferences change, however, other than a few cosmetic changes such as clearer coats, the Pugs in Australia have maintained breed type.

**A.3.** I still see the trace however it is generally in the darker, older style of Pugs. While striving for a lighter, clearer coat, some pigment has been lost and the trace, mask and toenails have suffered. Unfortunately many judges mistake the darker (apricot) Pugs as "smutty" and penalise them accordingly. Therefore, some breeders have strived to breed a more visually pleasing dog to impress the judges.

**A.4.** 1) Overall balance – The Pug is a square, compact, cobby dog. All parts of the dog should be in harmony with no one part exaggerated in any way. The important thing to remember is square. Pugs long in back or low on leg are undesirable

2) Sufficient substance, while still remaining a toy sized dog. Too many Pugs are well oversize. The standard calls for 6.3 – 8.1 kilos, however realistically a mature dog would be more along the lines of around 10 kilos.

3) Head – The Pug has a very appealing face with dark lustrous eyes that are full of fire and mischief. Hallmarks of the head are well defined wrinkles (making a diamond or thumbprint when alerted), small, black velvet like ears, a wide, blunt muzzle and a well placed nose with a good open nostril. A dark mask adds to the overall appeal.

4) Movement – Just because the Pug is a lap dog and a toy breed does not mean that it should not be sound. Soundness is very important. The Pug should exhibit a slight roll behind, typical of the breed.

5) Hallmarks – important hallmarks of the breed are the head, cobby square body, high set tail curled tightly over the hip and the slight roll behind. The trace and forehead diamond are also hallmarks to look for.

**A.5.** I think the standard is quite straight forward and easy to understand. Many judges tell me they have problems with judging Pugs as they vary so much.

I think it's important to look for the hallmarks of the breed... what features and characteristics makes a Pug the unique and fantastic breed they are,.

**A.6.** Yes most certainly within the purebred breeder community. Purebred Pug breeders overall are looking at a number of ways to improve the health of the breed. PDE testing, hip and elbow scoring. Breeding for bigger nostrils and a slightly smaller eye (not so poppy as in the past). Also breeding with parents who can cope with our hotter climate and those that do not suffer breathing problems.

**A.7.** Research the breed to make sure it is suitable to your lifestyle. Pugs are a delightful breed but not for everyone.

Meet the breeder (if possible) and ensure you buy a puppy from someone you would be happy to go back to if you have any issues.

**Jenny Williams**  
**Kabova & Mackerly Pugs**

\*\*\*\*\*

**A.1.** When we moved to New Zealand 12 years ago I had Labradors due to an operation going wrong I had to stop showing them, 7 years ago a Pug Called Cookie was being shown and I fell in Love with him. So 7 years ago Maisey arrived followed by Ace. Maisey was retired on 50 CCs. Ace still goes to the occasional show and has 75 plus CCs.

I chose Pugs because they are loving, loyal and don't realise how small they are They think they are Labradors I now own 7 of them.

**A.2.** I have only lived in New Zea-

## We asked

**Q.1.** How long have you been breeding Pugs? Why are they your chosen breed?

**Q.2.** How do you feel the standard of Pugs today compares with say 10 years ago?

**Q.3.** Could you list in order of priority the 5 most important points you think a judge should look for in the Pug?

**Q.4.** Of the 5 points listed above which do you think need more attention from breeders in Australia and New Zealand?

**Q.5.** Does the Pug have any health problems?

**Q.6.** What advice would you give to a potential Puppy buyer who is considering a Pug?

land for 12 years coming from England and only owned Pugs for 7 years. I think pugs have got smaller with small heads which is the opposite

to the breed standard. Also there has crept into the pug a snappy growling attack anything type of pug which is also wrong for a companion dog.

**A.3.** 6 of my 7 pugs have traces .. The only one who does not is Maisey and she's a silver. It seems to be in my lines. Judges always comment on there trace.

**A.4.** Good Head, Good Tail set, Temperament must be good, Movement, and a Dark eye.

**A.5.** The Pug Must have a good temperament and a fun personality.

**A.6.** In the last 7 years I believe more new owners are conscious of the health issues that pugs have and what can be tested for like PDE and PKD. These tests are so cheap \$50us that I cant understand why more breeders do not test. We tested all of our pugs and all are N/N Clear. Which means I can use my boys on N/S bitches and know that its OK to do it..

**A.7.** My advice would be ask questions. Ask if they have tested the dog/bitch for any thing.....and ask to see the mother - is she out going is she nervous? And what's the dad like if he's there. Are the puppy's out going? Ask if they are registered. Don't be afraid to ask any questions and if you are not happy walk away. A genuine breeder will only be too pleased that you are asking questions.

Contact your kennel club or local Pug Club for advice. They to will be happy to help you.

**Ann van Gijs ASAY PUGS**  
**President of the Auckland Pug Dog Club**

\*\*\*\*\*

**A. 1.** My parents (Roy and Elizabeth Ward) and I have been owned by pugs

for 28 years – our first registered litter under the Glomar prefix was in 1990.

Why are they your chosen breed? When I was 7 it became evident to my parents that I had a genuine report with dogs so was told I could choose my own junior handler dog. It had to be small and short haired. I was lent a pug for a child handler competition and won first place, I remember the look of affection on the dogs face when I hugged her in thanks and from then I was hooked – our family's first pug arrived when I was 10 and we have been blessed with numerous loving, comical, wicked and loyal companions ever since.

**A.2.** I have been fortunate enough to breed and exhibit in both New Zealand and Australia. During the last few decades, the pug breed has grown and maintained its popularity numerically and is recognised consistently at group and in show level. And rightly so. Dedicated show breeders have worked hard and because the overall quality in the ring is good, exhibitors have to be constantly evaluating and striving for better if they want to end up in the winning circle.

**A.3.** No, the trace is not an urban myth – it is evident from time to time. However, there are a lot of influences on the quality of a trace. The coat colour is the first influence, smutty pugs often have saddles which are not to be confused with a trace. Pugs with poor pigment also lack evidence of a trace as do pugs with thick coarse, incorrect coats. A beautiful soft silky textured apricot/fawn pug with excellent pigment and mask can exhibit a correct trace – but this fades in and out depending on the season – pugs moult twice a year and shed copious amounts of thick undercoat! With all these factors, if you see a correct trace when judging, acknowledge it but treat it as the 'icing on the cake'.

**Continued over page**





## They answered

**A.4. Head** - Yes, this is a head breed, but PLEASE make sure you know what a correct head is! It is round, not oval. It is flat when viewed side on, the nose does not protrude, nor the wrinkle over the nose. The nose placement is paramount for the rest of the head proportions to be correct - including the eye placement. The eyes are large, dark and round. It has wrinkle on the forehead - not extending to their necks. Ears, they should not extend past the corner of the eyes giving a hound look - the standard says small, and fly away ears should not be mistaken as rose ears. Most importantly it is 'massive' BUT still in proportion to the body. This is not simply a case of the 'bigger the better'.

**Coby, square bodies, with short backs and straight top lines** - The standard states 'multum in parvo' so they should be well muscled - but remember they are still a toy dog so size should be taken into account.

**Movement** - the pug roll is a characteristic of the breed - however a pug should still move true away from you with the slight roll coming from the hips - similar to a super model on a cat walk. Front movement should be straight with shoulders well under. When moved at speed, a pug, like any breed of dog, will gravitate to the centre. However, this does not change construction and a well moving dog will do so when gaiting slowly or 'showing off' at a faster speed - judges need to make sure they know WHAT they are looking for before asking a handler to slow down - my pugs love 'strutting their stuff' and it is them that sets the pace to which we move.

**Tails** - a correct top line will be highlighted with the correct high set tail. Pugs tails should curl tight over the hip, not bounce around and wave like a flag! A single curl is not to be faulted but a double curl is perfection.

**Temperament** - this is a companion animal. They can be cocky and 'out-spoken' towards other dogs - as they do have an unrealistic perception of their own being - but never towards people. While they can, at times, be apprehensive in new situations, they should generally be happy, comical and fearless.

**A.5.** A statement in relation to temperament. Please see above.

**A.6.** No, I don't believe so. I like to think most of my fellow exhibitors do have the well-being of this breed in mind and monitor and test for what they can. The Pugs at dog shows appear generally healthy representatives

of the breed. My concern for our breed is the popularity and the uneducated breeding of back yard breeders - and some show breeders - who have little or no knowledge or interest of the hereditary issues related to the pug. Pugs coming into re-home/rescue still present with many breed related issues.

**A.7.** Educate yourself. Google it! Learn everything you can about the breed. Talk to breeders and ask questions - lots of them - and then find someone you are comfortable with and be prepared to wait. Use your common sense.

**Penny Calman  
Glomar Pugs**

\*\*\*\*\*

**A.1.** The Breed claimed me in 1968 when "Gila" a pound pug came home from the Vet School Clinic with a grossly ulcerated eye to be "minded". I fell in love with their charm and intelligence and courage.

**A.2.** Yes, on the whole though various kennels produce differing versions of the standard, depending on the obsessions of the day on size, colour/pigment and even curl of tail!

**A.3.** The trace is a shading down the backline but narrow, not a thin pencil line that it was in the baby puppy. It does sometimes spread over the back like a saddle but shouldn't spread out into smuttiness.....There is a pigment problem if the trace is not present in the pale clear coat. The issue then is "what is a clear coat in a fawn pug?"

**A.4. 1 Balance** - Harmony in the way the pug is proportionally put together. Huge or coarse heads on shelly bodies ugh - no tuck-up permitted. Proportion means the head is suitably attached to the chunky, short-backed body by an arching or even crested neck. Topline and underline should be seen to match.

**2 Tailset** - topline - neck/head carriage shape all define standard's correctness. High tail set is more important that double twists etc so that the outline of the pug looks correct in moving out.

**3 BODY**...The pug is not just a Head breed - needs a chunky well boned body to take the well-muscled covering under that coat!! The forechest helps the chunky/blocky look.....>multum in parvo

**4 Head** Round shape and flat in profile with a shallow jawline, Please notice the wry mouth and disqualify. Head must be carried proudly high without being strung up. No spaniel ears, pinched nostrils either

**5** A pug is no sloth, should show plenty of reach and drive which shows the soundness of his anatomy

## We asked

- Q.1. How long have you been breeding Pugs? Why are they your chosen breed?**
- Q.2. How do you feel the standard of Pugs today compares with say 10 years ago?**
- Q.3. Could you list in order of priority the 5 most important points you think a judge should look for in the Pug?**
- Q.4. Of the 5 points listed above which do you think need more attention from breeders in Australia and New Zealand?**
- Q.5. Does the Pug have any health problems?**
- Q.6. What advice would you give to a potential Puppy buyer who is considering a Pug?**

on the whole.....should trot 4 square but still show the characteristic pug-roll -at the correct pace which is a purposeful stride

**A.6.** Yes, most certainly due to our ability to have most genetic diseases eliminated by genetic testing. We mustn't leave out the dear old internet which gives all that info on health problems, besides the gossip. We now can take all that "gossip" to the Vets for verification! Animal husbandry and nutrition has also improved for most breeds including pugs.

**A.7.** What would your advice be to a potential puppy buyer when looking for a Show pug?.....very tricky one! Have a good look at the Dam line (line bred?) for potential show dog traits and good conformation. If you know the Sire to be dominant look at him and his mother. The most telling trait is Personality/Character - must be lively, irrepressible, bossy, courageous. Make sure your puppy is the same width hips and shoulders. Make sure luck is on your side too.

**Eve Tzipori Anyang Pugs**

# Asay Pugs



**Left: NZ CH KANGALA MIRANDA**

**Right: AUST/NZ CH EHF1 OLE GUNNAR OF NORWAY AT ASAY**

We are a small kennel relatively new in Pugs (7 years) and only have the occasional litter. We have strived to breed the best bitches to the best dogs.

**NZ CH GLOMAR ROLL OF THE DICE**

I am proud of my record in the show ring with 5 Champions at home and another 7 by my stud dogs with different breeders.

Both of my adult males are at stud to approved bitches only. Frozen semen for sale.



**MRS ANN VAN GIJS, 302 NEWELL ROAD, RD1 TOKOROA, NEW ZEALAND.**  
07 886 5584 email brackenlodge@xtra.co.nz  
new web page <http://asaypugs.com>



# KABOVA

Breeder of Multi BEST IN SHOW winners  
and Supreme Champions

Home to imported  
Best in Show winning  
Supreme Champions

## Kabova Pugs



### STEVE

Owned by Judd Simantov  
(Johannesburg, South Africa)

BIS & RBIS Ch Kabova  
Pawfectly Ruff (Exp SA)



### DASH

BIS & RBIS Supreme  
Ch Kabova Mr Incredible



### PRESTO

BIS Ch Kabova  
I've Got The Magic



Am Gr Ch & Supreme Ch Rose-Treasure  
Win One For The Gipper (Imp USA)  
pictured with Jenny Williams.

KABOVA PUGS Jenny & Philip Williams  
Sydney, Australia  
[www.kabova.com](http://www.kabova.com)

### ORSON

BIS Supreme Champion  
Kabova Mr Perfect Gentleman





Breed Feature  
**The PUG**

This delightful little breed has been around since ever and has a marvellous history of being loved and owned through the centuries by many noted people from Empresses to Kings.

His motto of "Multum in Parvo" a lot of dog in a small space is so very indicative of this breed if you have ever shared time or home with one of them. A compact, square breed he exhibits all the power and fire of a dynamic little rogue.

Being a short coated little fellow he is often presented as a no nonsense dog and thus not needing special attention to grooming. One should never discount a dog's need for special grooming just because he is not a traditional "hairdo" breed. You may not be able to snip this little guy into shape but you sure can do a whole bunch with the descriptions as outlined in your standard.

The coat is described as "fine, smooth, soft, short and glossy, neither hard nor woolly." Well, that's pretty easy and very direct. No misinterpretations can be made of that. Thus the quest is to keep the coat as true to this as possible and maintain the condition, feel and shine.

The Pug has a tendency to feel the heat and most are prone to wallowing in water and ending up quite smelly little critters. They snuffle, snort and generally make themselves a bit pongey. **Plush Puppy Odour Muncher** is a must for the warm months of the year. It will help get rid of the odour and leave a nice light fragrance.

Remember to appeal to as many of a judges senses as possible. The feel of the coat, the look of the coat and the smell of the coat are all important even if some are subliminal.

The Pug's grooming regime ought to consist of a shampoo that will leave the coat in its correct state with lots of shine and the **Plush Puppy All Purpose Shampoo with Henna** is a wonderful naturally sourced shampoo that doesn't alter texture and leaves a fabulous shine. It contains a very good extract of Henna that does not build up on the coat and won't make the coat brittle after prolonged use. Use at the rate of 5:1 i.e. 5

# GROOMING TO WIN

With PLUSH PUPPY

parts water to one part shampoo.

Plush Puppy has developed an amazing new shampoo designed for Brachycephalic type breeds and alike. **Plush Puppy Let's Face It** is a revolutionary shampoo formulated not to sting eyes and has absolutely NIL FRAGRANCE so as not to annoy the sensitive noses of a dog. It has special natural ingredients to 'clean and sooth' folds and creases of a dogs face and the Blue Cypress Extracts are particularly effective on Brachycephalic face types where wrinkle can get infected or sore.

This product is very concentrated and is dispensed as a foam that is easy to control and apply. A little "Let's Face It" goes a long way and is another magical product from Plush Puppy. Ingredients: SugaNate – a sulfate free base with low irritation to eyes and skin. Panthenol – Pro Vitamin B adds moisture to skin and aids healing and Blue Cypress Extract – Native Extract has anti-inflammatory benefits and improves appearance of coat. This product is perfect for the Cavalier face and it's soothing and healing benefits.

For the Puglets that have itchy skin, then use the **Plush Puppy Sensitive Skin Shampoo** at a ratio of 3:1 till it starts to clear and then dilute as much as up to 10:1 for further use.

Itchy scratching with Pugs is more prevalent in those kept indoors where they tend to overheat. Heating and air conditioning can all play havoc except in extreme conditions when it is necessary. This dog is often better suited to outdoors.

If your coat is a little on the harsh side due to the elements then use the **Plush Puppy Silk Protein Conditioner** at a ratio of 10:1 as this will help soften the texture. If the coat is just right then skip the conditioner. In both cases you then use as a final rinse **Plush Puppy Seabreeze Oil** at a rate of 1 table spoon to 1 gallon/4 litres warm water. Either hydrobath through the coat or sponge through the coat or dunk the dog in the mix. Whatever technique suits you, and leave in the coat - do not rinse again.

The Seabreeze Oil is just the most magical product. It contains Evening Primrose Oil, Calendula Oil and lots of calming and healing type goodies that help to repair, sooth and generally give a good pickup to a dull or tired coat. Long term it will give an overall good health and vitality to the coat. You can use this in between shows or when preparing for a show. It is neither greasy or sticky nor will it build up on the coat. It is water soluble and helps to repel dirt.

Now I am an advocate of blow drying just about everything as it helps rid the coat of dead and loose hairs and keeps the coat "rolling" all the time without the holes and gaps one gets with regular shedding. Nothing removes dead hair like this. It also saves on wrists and arms that over the years end up with RSI and arthritis from all the grooming that dog exhibitors seem to have. Who needs to stand there brushing and using mitts and stuff when a good blow with a cool dryer does a great deal of the work for you? Just watch your Pug's eyes when flinging the dryer around. You don't need ulcers in these guy's eyes.

Now show day you can give a light "go over" with the mitt and then an oval cushion brush that has a fair amount of bristle to plastic - I prefer 2/3 bristle to 1/3 plastic **Plush Puppy Blue Anti-Static Porcupine Brush**. Some Pugs have some longer tufts of hair around

the rear end and these can be shortened and neatened with a pair of thinning shears. Don't go gung ho with a regular pair of shears unless you are Vidal Sassoon. Whiskers are optional but I tend to like the character they give to the face.

For final shine - the black points such as face and ears can have a light application of **Plush Puppy OMG R2U** and don't forget to keep the wrinkles clean. A light "go over" with a face washer with Plush Puppy Let's Face It morning and night keeps these trouble free. Now for the final glam. Sprinkle a tiny amount of **Plush Puppy Pixie Dust** onto a **Plush Puppy Blue Pure Bristle brush** and brush against the coat growth to settle the powder down lower and leave the shimmer on top. Discretion is the key word when using this. It is a fabulous effect and applied judiciously, gives pin pricks of light to the coat. Finish with a light spray of **Plush Puppy Shine & Comb** just prior to going in the ring. The old girls of years gone by would use a piece of silk rubbed backwards and forwards over the coat for shine. That's not really good for those arthritic wrists either!

So, now you have a star. Your cheeky little Pug will still have the power pack look all barely contained within his little square body but will be bursting with sheer "joie de vivre" and exuding glamour. He is hard to go past with his playful little nature and with all the grooming presentation to enhance his standard requirements he will be a hard contender to beat.

PLUSH PUPPY AUSTRALIA



[www.marellenshowribbons.com](http://www.marellenshowribbons.com)

## MARELLEN SHOW RIBBONS

Ph/Fax: 02 4774 1809

**Marellen Show Ribbons Est 1977**

**For all your Ribbons and Sashes call Tina to discuss your club needs.**

CRYOGENES

International & Local Frozen Canine Semen Movements  
20 years experience

**Cryo Genes Pty. Ltd.**  
ABN: 39 464 773 059  
Diane Anderson

31 Highfield Way  
Tyabb Victoria 3913  
Australia

Phone: + 61 3 5977 4537  
Fax: + 61 3 5977 3510  
Mob: 0408 565 026  
E-mail: [info@cryogenes.com.au](mailto:info@cryogenes.com.au)  
[www.cryogenes.com.au](http://www.cryogenes.com.au)

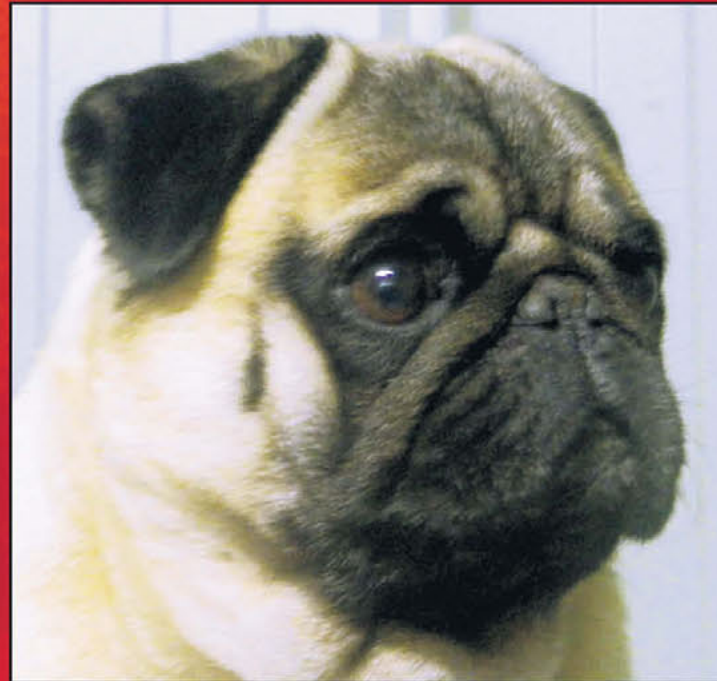


# ANYANG PUGS

WELCOMES

CARAVELLE'S TICKETS HEADLINER (IMP USA)

# “TICKET”



FROM THE CELEBRATED KENDORIC LINE IN THE USA TICKET HAS JOINED US HERE AT THE OLD HALL ALLORA. HE IS WARMLY WELCOMED BY:



GR CH ANYANG BARNABY BEAR



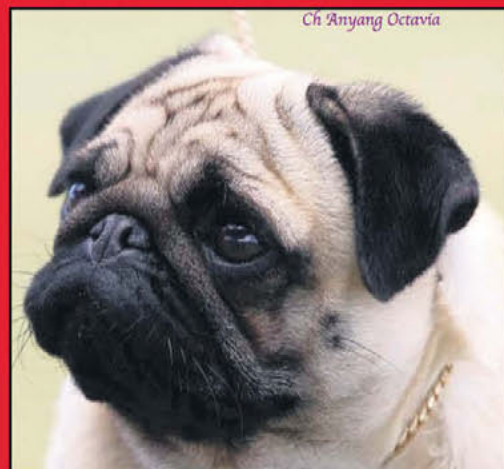
CH ANYANG MADAM SOPHIE



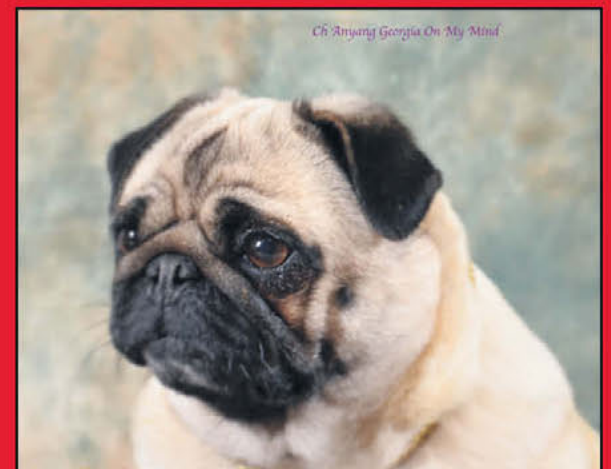
MARBELTON LUIGI (IMP UK)



CH ANYANG WILLOUGHBY (AI)



CH ANYANG OCTAVIA



CH ANYANG GEORGIA ON MY MIND



AND THE NEXT GENERATION WHO COME TO US BY WAY OF IRELAND'S JARPPi:

ANYANG FRIDAY ON MY MIND AI (PICTURED RIGHT)

AND ANYANG MARCELLA AI (PICTURED LEFT)



ANYANG PUGS  
EVE TZIPORI  
QUEENSLAND  
AUSTRALIA





# The Breed Standard

## **GENERAL APPEARANCE:**

Decidedly square and cobby, it is 'multum in parvo' shown in compactness of form, well knit proportions and hardness of muscle, but never to appear low on legs.

## **CHARACTERISTICS:**

Great charm, dignity and intelligence.

## **TEMPERAMENT:**

Even tempered, happy and lively disposition.

## **HEAD AND SKULL:**

Head relatively large, round, not apple-headed, with no indentation of skull. Muzzle relatively short, blunt, square, not upfaced. Nose fairly large with well open nostrils. Wrinkles on forehead clearly defined without exaggeration. Eyes or nose never adversely affected or obscured by over nose wrinkle. Pinched nostrils and heavy or over nose wrinkle is unacceptable and should be heavily penalised.

## **EYES:**

Dark, not too large, round in shape, soft and solicitous in expression, very lustrous, and when excited, full of fire. Never protruding, exaggerated or showing white. Free from obvious eye problems.

## **EARS:**

Thin, small soft like black velvet. Two kinds – 'Button ear' – ear flap folding forward, tip lying close to skull to cover opening. 'Rose ear' – small drop ear which folds over and back to reveal the burr.

## **MOUTH:**

Slightly undershot. Wry mouth, teeth or tongue showing all highly undesirable. Wide lower jaw with incisors almost in a straight line.

## **NECK:**

Slightly arched to resemble a crest, strong, thick with enough length to carry head proudly.

## **FOREQUARTERS:**

Legs very strong, straight, of moderate length, and well under body. Shoulders well sloped.

## **BODY:**

Short and cobby, wide in chest. Ribs well sprung and carried well back. Topline level neither roached nor dipping.

## **HINDQUARTERS:**

Legs very strong, of moderate length, with good turn of stifle, well under body, straight and parallel when viewed from rear.

## **FEET:**

Neither so long as the foot of the hare, nor so round as that of the cat; well-split-up toes; the nails black.

## **TAIL:**

High set, curled tightly over hip. Double curl highly desirable.

## **GAIT/MOVEMENT:**

Viewed from in front should rise and fall with legs well under shoulder, feet keeping directly to front, not turning in nor out. From behind action just as true. Using forelegs strongly putting them well forward with hindlegs moving freely and using stifles well. A slight unexaggerated roll of hindquarters typifies gait.

## **COAT:**

Fine, smooth, soft, short and glossy, neither harsh, off-standing or woolly.

## **COLOUR:**

Silver, apricot, fawn or black. Each clearly defined, to make contrast complete between colour, trace (black line extending from occiput to tail) and mask. Markings clearly defined. Muzzle or mask, ears, moles on cheeks, thumb mark or diamond on forehead and trace as black as possible.

**SIZES:** Ideal weight: 6.3-8.1 kg (14-18 lbs).

## **Faults:**

Any departure from the foregoing points should be considered a fault and the seriousness with which the fault should be regarded should be in exact proportion to its degree and its effect upon the health and welfare of the dog.

Notes: Male animals should have two apparently normal testicles fully descended into the scrotum.



# Let's hear it for the GIRLS!!



## 2015 PUG CLUB OF VICTORIA

### BEST IN SHOW

SUPREME.CH. RAESAY RED RED WINE "Hilley"  
Judge: Mrs L Vickers-Smith  
(Wisselwood Pugs – USA)



## 2015 PUG CLUB OF NSW

### BEST IN SHOW

CH. PANDANLAMO ROLY PUDIN NPIE "Puds"  
Judge: Mr Noronart Rattanasakvibool  
(Thailand)



## 2014 PUG CLUB OF VICTORIA

### BEST IN SHOW

CH. BIRSAY SUMMER WINE "Audrey"  
Judge: Mrs E Arnold  
(Snugglepug Pugs – UK)



## 2014 BEAGLE CLUB OF VICTORIA

### BEST IN SHOW

CH. RAESAY SPIRIT IN THE SKY "Iris"  
Judge: Mrs K Mangan  
(Treeview Beagles – Aust)



**Birsay – Jock & Elaine McRae**  
**Raesay – Leonie McRae & Keith Fallow**  
Owners/breeders of 142 champions  
15 Grand Champions  
6 Supreme Champions  
Est 1970  
[www.birsaypugs.com](http://www.birsaypugs.com)



# Multi BIS Show Winner Ch Kabova Lethal Weapon

No 1 National Rising Star Toy Group 2014\*

No 1 Pug Show Dog of the Year 2015\*

# Mitch

Photos by  
Tamara Louttit



Almost a Supreme Champion  
at only 18 months old.

**Maskerade Pugs • Debra & Jorja Cummings**  
Sydney Australia 0418 493 399 [www.maskeradepugs.com.au](http://www.maskeradepugs.com.au)



Introducing our first  
Maskerade litter sired by  
Mitch about to start their  
career in the show ring

\*29th July DOL PS

# GLOMAR PUGS

*Bred with thought • Shown with pride*



NZ MULTI BISS CH. GLOMAR ICAN CALL THE SHOTS



NZ MULTI BIS BISS CH. GLOMAR LOUIS VUITTON

**Owners/Breeders/Exhibitors of New Zealand's Top Winning Pugs**

Penny Calman E: [glomarpugs@xtra.co.nz](mailto:glomarpugs@xtra.co.nz) W: [www.mydogweb.co.nz/glomarpugs](http://www.mydogweb.co.nz/glomarpugs)