



# • BREED FEATURE • HAVANESE



## They answered

A.1. 2008 was the year that changed my life. I purchased and started showing my first Havanese, and I was hooked. I was very fortunate

“

*Their reputation as a friendly and happy dog is growing. They are the perfect family dog, naturally relating well to children and getting on well with all family members, including other dogs and cats. They are very keen to please.*

”

as he was a wonderful show dog who went on to obtain his supreme title – Cubet Abracadabra – Magic. I started breeding Havanese the following year, and I have been very happy and fortunate with the many wonderful dogs that I have produced over the last nine years, and the fantastic friendships I have made through connections with owners of my puppies.

I had been involved with rescue dogs, doing agility and obedience, prior to getting Magic. I was interested in conformation and had heard about the Havanese. They were rumoured to be very happy, loving and easing going dogs, and that is what attracted me to the breed.

The Havanese are a long coated dog, and I am proud to say that for me the hours of grooming are a great bonus with the breed. I love the opportunity it provides for me to spend one on one time with each of my dogs, and I am very proud to have the results of that effort on display in the show ring.

A.2. Their reputation as a friendly and happy dog is growing. They are the perfect family dog, naturally relating well to children and getting on well with all family members, including other dogs and cats. They are very keen to please, and so are a lot of fun to have around the house with their antics. They are low maintenance, needing little formal exercise, so are good for all types of housing arrangements. Havanese have few health problems, and are easy to care for with many owners choosing a clipped-off coat.

A.3. Elastic gait  
Balanced proportion, low on leg, slightly longer than tall.  
Quality coat, soft and well

groomed.

Not overly large, appropriate to their status as a Toy breed.

Happy and friendly nature.

A.4. ALL COLOURS PERMISSIBLE.

It is a common misconception that some colours are not allowed.



A.5. Havanese are not known for any breed specific health problems, but can be susceptible to any common dog ailment.

A.6. I always recommend that puppy buyers spend time getting to know the breeder, as a breeder who is communicative and supportive of a puppy buyer is likely to have good quality puppies.

Ask lots of questions, and be reassured by a breeder who is open and happy to answer all your questions. I match the temperament of my puppies with potential buyers, to make sure my puppies will be well suited to their new home. So rely on the advice of your chosen breeder – if they are like me they will have the best interests of you and your new puppy first and foremost.

Gail Ransom Karyme

\*\*\*\*\*

A.1. I have been breeding Havanese for a little over 10 years but have shown them for a few years longer.

I fell in love with the breed when I met a Havanese at the World Dog show in Portugal in 2001. I imported

“

**Overall balance – correct head and body proportions**

**Elastic Gait**

**Temperament – clown like,**

**outgoing happy little dog**

**Coat quality and texture**

**Important breed hall-**

**marks – shorter upper arm**

**and unique topline**

”

a few not long after and have never looked back.

A.2. They are a lovely little dog with a great personality.

Very easy to train and not a yapper like many other toy breeds. They are

## We asked Breeders

Q.1. How long have you been breeding Havanese? Why are they your chosen breed?

Q.2. To what do you attribute the growing popularity of the Havanese breed?

Q.3. Could you list in order of priority the 5 most important points you think a judge should look for in a Havanese?

Q.4. If you were able to add a sentence to the Havanese breed standard what would it be?

Q.5. Does the Havanese breed have any health problems?

Q.6. What would your advice be to a potential puppy buyer when looking for a Havanese puppy?

happy to live in an apartment and get along with all other kinds of pets. Havanese love children and are therefore great family dogs.

A.3. Overall balance – correct head and body proportions

Elastic Gait

Temperament – clown like, outgoing happy little dog

Coat quality and texture

Important breed hallmarks – shorter upper arm and unique topline

A.4. All colours acceptable

A.5. We test for PRA. Like any small breed of dog you can have patella and hip issues but they are not very common in the breed.

A.6. Speak to the breeder and

With over 25 years experience in showing and breeding of show dogs. Using the EDELPARK prefix, I became involved in the Havanese breed over 13 years ago. I was attracted to their sweet, non-quarrelsome disposition – a small sturdy dog with immense charm. They are a small breed which makes them easy to travel with and adaptable to indoor and apartment living. They have a low shedding coat, are sturdy, playful and suitable for families of all ages.

A.2. On reviewing the Havanese registrations through ANKC, the number of Havanese registrations has increased slightly and not to the extreme level of some other 'popular' breeds. In my opinion, at this time, they are still a relatively 'rare' breed. The attributes that new owners mention to me are the low shedding 'allergy free' coat, affectionate sweet natured temperament, their suitability for all ages in the family and that they are a good size for indoor living.

A.3. GAIT: The Havanese has a distinctive gait which is light footed and elastic. Not to be confused with 'suspension' or 'reach', an elastic gait is a spring like movement where a dog absorbs the impact when the feet touch the ground. An elastic spring is like a slow bouncing ball. A natural trot on a loose lead best shows off the breeds elastic gait. There is no reason for the Havanese to be shown strung up on a tight lead around the show ring with the front feet barely touching the ground.

MODERATION: Think 'moderation' when viewing Havanese. Moderate grooming, moderate angulation, moderately marked stop, muzzle narrowing progressively, neck of medium length and slight rise over the loin. Havanese are a sturdy little dog, this does not mean they are overweight and coarse. Havanese are a companion dog and need to fit comfortably on a 'ladies lap'; therefore weight (although not written in the standard) should

Continued on page 46



make sure you feel comfortable with them. Meet the parents of the puppy and maybe attend a few shows to see the Havanese in comparison to other breeds.

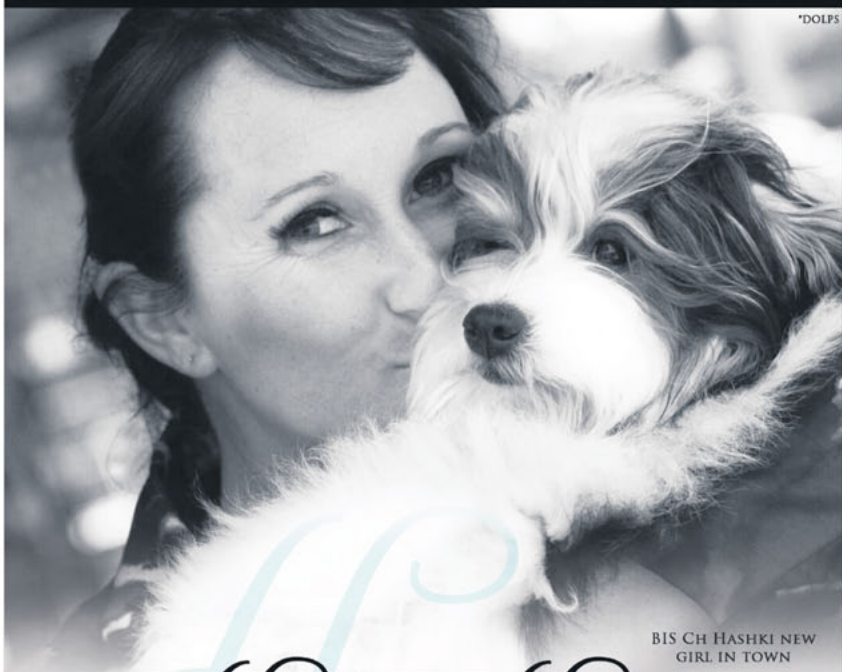
Philip & Jenny Williams Hashki

\*\*\*\*\*

A.1. Growing up on a farm on the east coast of Australia, as a child I had many animal friends. While at school I competed at all levels with show ponies and horses, from pony club to National events. While at University I moved into the world of show dogs, starting with Smooth Fox Terriers. I also handled dogs for other breeders, learning about other breeds and their show preparation along the way.

# AUSTRALIA'S NUMBER ONE HAVANESE BREEDER\*

\*DOLPS



BIS CH HASHKI NEW  
GIRL IN TOWN

## Hashki Havanese

WHERE TYPE AND SOUNDNESS MATTER

BREEDER OF BEST IN SHOW WINNERS AT TOY SPECIALTY & ALL BREEDS LEVEL



GR CH HASHI LORD  
OVTH RINGS



GR CH HASHKI  
ZUBARU



SUP CH  
HASHKI JUST  
GO WITH IT



SUP CH HASHKI  
LITTLE BEAR



SUP CH HASHKI  
KAMIKAZE KID

JENNY & PHILIP WILLIAMS

SYDNEY, NSW.

WWW.HASHKI.COM



# • BREED FEATURE • HAVANESE



## Grooming with PLUSH PUPPY

The Havanese is an engaging breed causing much delight amongst exhibitors as more and more enter the conformation rings. I have often been drawn to the sight of this little Cuban export who has made the U.S. and now the rest of the world his domain. Your standard does go quite a way to explanation on where and how this coat should be attended to which is interesting in itself, yet, the many questions I receive indicate there are still unexplained and grey areas to be clarified or defined.

Your Havanese coat is expected to be soft and light in texture and I have heard a good definition that states "it should look and feel like raw silk". It should not feel like a Maltese coat which is more like refined silk. Of course the Maltese is a single coat and yours is a double coat. Your standard requires a slightly wavy coat but not a really curly coat, nor a coarse wiry coat. Got the picture? He is also not allowed to be trimmed except for inside corner of the eye, feet and the nether regions of the anal and genital areas. Ah, a naturally outlined breed! He does have an interesting outline too, with his upward tilt to the rear and the flashy short upper arm area.

This characteristic spring lends enjoyment and energy to the presentation of this breed. So, what to do? The dangers are to go too straight and flat or too full and too much wave. A happy balance is the order. The hard yard starts with the coat at home bathing. Don't be afraid to use a couple of different shampoos on the one dog to achieve the exact result you want. If you have good texture and want shine, then use the Plush Puppy All Purpose Shampoo diluted 5 parts water to one part shampoo. Should the texture be too coarse, then use the Plush Puppy Conditioning Shampoo and if the coat is sparse, then use Plush Puppy Body Building Shampoo all at the same dilution.

For instance, if you have dog lacking undercoat, then use the Plush Puppy Body Building Shampoo on those areas and then maybe the Plush Puppy All Purpose Shampoo on the head, topline and tail where you don't perhaps want the extra lift. For white areas, you may prefer the Plush Puppy Whitening Shampoo at anything from 5:1 depend-

ing on the tonal effects required for a lovely white finish. For stubborn areas use Plush Puppy Wonder Blok. This product is one of our proudest achievements in helping to maintain a white stain free coat. It's not a bleach and contains no harmful chemicals but with the use of modern technology and high amounts of naturally sourced vegetable surfactants and glycerine, this product is designed to remove gently, unwanted warm/red tones to the coat. Best used on a damp/wet coat. Gently rub into the areas requiring a low time (5-10 minutes) and rinse. For maximum effects repeat or allow a longer time for this amazing product to work. As with all products take care around eyes.

The Havanese is a coated face breed and care must be used. Use Plush Puppy Let's Face It; this is what the dog showing world has needed for way too long. Another one of the famous Plush Puppy products that with the latest of technology and the highest amounts of naturally sourced ingredients has developed a product that is a must! This is a hypoallergenic sulfate free foaming shampoo designed for faces. It's no tear formula with the highest quality Blue Cypress Extracts, Panthenol with Pro Vitamin B and SugaNate. These special ingredients clean, soothe, adds moisture, aids healing and anti-inflammatory benefits. A small golf ball sized amounts directly to the face and eye area allows you to thoroughly clean without causing irritation. Can be used in and around ears also with the same benefits. Its low foaming design allows easy of rinsing yet complete cleaning. It is a matter of tweaking sometimes the various areas of the dog for the perfect outline rather than a blanket all over approach. Next, use 2 tbsps of Plush Puppy Silk Protein Conditioner to a quart/1 litre of water and saturate well working through with your fingers and rinse.

Then add 1 tbsps of Plush Puppy Swishy Coat to a quart/1 litre of water and saturate the coat thoroughly and leave in - don't rinse. If you have a wildly profuse coat then you may find it beneficial to add a tsp of Plush Puppy Blow Dry Cream in with the Swishy Coat mix. The Swishy will keep the coat from jumping all over the place and keep some semblance of order to the drape, and the Blow Dry Cream has the action of softening

and flattening though this proportion is only enough to keep excessive billowing from the coat and not enough to overdo the action.

The drying process is relatively straight forward - the Plush Puppy Ultimate Pin Brush gives air to hair and a bristle flattens, so the choice is clear - when the coat is between the sparse to ideal, then only the Pin is required as you don't want to overdo the flattening or the straightening process. 99% of the time the Pin is all that is required. It will give you just the right look. Only use the Plush Puppy Ultimate Anti-Static Porcupine Brush which is approx. 50% bristle and 50% nylon on the tail or around the head. The tail is required to plume with long silky hair and fall either straight forward or lie to one side of the body and the head needs some definition. For quicker drying time use Plush Puppy FAST. This is a revolutionary innovative Fast Dry Blow Dry Spray that combines the latest active ingredients together to dramatically reduce drying time; adds moisture and conditions while protecting the coat. Plush Puppy FAST is probably the most technically advanced formula in the Plush Puppy range to date!

The Porcupine brush will assist in lightly smoothing and shaping these coats for enhancement. I have not covered the cording so for this coat you don't want a lot of froth and bubbles as you can't rinse cords for ever - use the Plush Puppy Shampoo at 40:1. That's easy isn't it? No fuss, no bother and easy to rinse. Most importantly do not use conditioner on cords. Conditioner not only causes fluffy bits and unravels cords but also rots the cords, being almost impossible to rinse out. Your corded Havanese's best friend is Plush Puppy Seabreeze Oil; which is a plant oil and is water soluble, formulated from Evening Primrose Oil, Calendula Oil and other such niceties. Use at 1 tablespoon to 1 quart/litre of water and leave in, don't rinse. This will help keep the cords hydrated. Don't be afraid to use this same mix for your uncorded Havanese for in between shows around the pee feathers especially, and indeed, tail, skirt and just about everywhere! No amount of work is too much for a show dog after all. Now back to the uncorded Havanese again - a discreet amount of Plush Puppy Puff can be used on the head piece and ears for added lift where required after bathing and blow dried.

This dog does need to attain a natural appearance. For your groom-

ing spray use Plush Puppy OMG; a revolutionary grooming spray that lives up to its name. A light spray of OMG and brushing in allows this product to refresh the coat leaving it feeling wonderful. Using at an approximate mixture of 1 part OMG to 20 parts water as available in the OMG ready to use or using this break down form the OMG concentrate. The stronger the mix the stronger their effects. Using OMG can be a one off at shows or during the drying process after bathing. An amazing product for regular brushing also. OMG never builds up, never goes stringy.

A product that took years to develop using the latest of technology for maximum effects. A true necessity for the tool kit.

You would use Plush Puppy Coat Balm on show day to keep static at bay and to add a touch of weight to the hem of the coat - just smear a light spray onto your hands and wipe down the coat lengths and add extra to the hem. You can use this several times a day without any adverse effects to the coat and keeping the natural feel and appearance to the coat. It just helps the coat to behave - it does not however take the place of the use of the Swishy Coat during the drying. It is the two step action that gives the best result.

I keep reiterating that the Havanese is to be presented naturally. You may wish to also keep on hand the new Plush Puppy Powder Puff Regular which is a wonderful alternative to cleansing your dog when a wet Self Rinse is not an option - you don't want to go wetting a coat that has been carefully dried after all.

The Powder Puff is a dry powder cleanser and deodoriser and very handy for long show circuits, wet and muddy days and dogs who have poor toilet manners. Your Havanese is ready to go. This springy gaited little person with his characteristic up-held high head and flashy gait is an emerging force in the show scene. He doesn't always get to chase the chickens but hopefully now he will get to chase all those coveted ribbons. I have high hopes for this breed from all the energy I feel from the devoted owners and breeders I speak to. The standard is your Bible for this breed and those who follow the path after you will thank you for the hard work you have invested in this wonderfully exciting breed in the ring.

**Plush Puppy Australia**





# KARYME HAVANESE

Breeder of Best in Show Winning Havanese

## Our Current Show Team:

BISS Aust Ch Karyme Heartbeat At My Feet

BISS Aust Ch Karyme Peloton



Owned and Handled by Gail Ransom



Owned and Handled by Tracy Stewart

Best in Specialty Show Winner  
Multi Best in Group Winner  
No.1 Havanese 2016\*

Best in Specialty Show Winner  
Multi Best in Group Winner  
No.1 Rising Star ACT 2016\*  
No.5 Rising Star National 2016\*



AND OUR NEW RISING STAR:  
KARYME TATTLE TAIL

*"Tully"*



Karyme Havanese: Gail Ransom | [www.karyme.net](http://www.karyme.net)

\* Top Dog Point Score



# • BREED FEATURE • HAVANESE



Continued from page 42  
ideally be around 6-8kg.

PROPORTIONS BODY: Proportions



are important to what makes a Havanese. They are a rectangular dog, slightly longer than tall. The HEIGHT (measured at withers) is 3' compared to a LENGTH (point of shoulder to point of buttock) of 4'. The breed standard mentioned 'low on leg', this refers to the Havanese small stature, not that it is a short legged dog. The measurement from the ground to the elbow must not be greater than that between the elbow and the withers.

The TOPLINE is not level. The topline is straight with a slight arch/rise over the loin. Hands on evaluation is required for proper assessment of the breed.

PROPORTIONS HEAD: The Havanese has a moderate and balanced head shape and is not a snub nosed breed. The length of the muzzle from the stop to the nose, is the same length as the stop to the back of the

“*The Havanese has a distinctive gait which is light footed and elastic. Not to be confused with ‘suspension’ or ‘reach’ an elastic gait is a spring like movement where a dog absorbs the impact when the feet touch the ground. An elastic spring is like a slow bouncing ball.*”

head (occiput). This is not to be confused with the American standard where the muzzle is shorter, than the head.

APPROACH: The Havanese is a soft natured breed. While their personality is happy and bubbly, it is not always

shown to strangers straight away. Judges should approach a Havanese gently, to let the dog know they are there. Some judges seem to forget that big looming shadows, with abrupt, heavy handling can seem scary to a small dog. Please approach the Havanese gently and let them know you are there.

A.4. There are two areas of the standard I feel should be reviewed:

The original FCI standard from which future Havanese breed standards were based, stated that the ‘Havanese dog is of small size’. Through various translations the description of ‘low on leg’ entered the breed standard. This does not mean that the Havanese has short legs, it is simply referring to a dog with small stature. The wording ‘low on leg’ in the standard should be removed or better explanation provided to avoid confusion.

The ideal height range in the Havanese standard is 23 to 27 cms. This provides a range of 4cms. However, the standard allows a tolerance of 2cm either side of the ideal height range. The allowable tolerance provides a height range difference of 8cm. This means that a Havanese of 21cm in

height could be competing against a Havanese of 29cm in height, which in my opinion, is too great a height difference for the breed.

A.5. Overall the health of the Havanese is good. As a smaller country with a small gene pool, dogs imported into the country require prior health testing which helps with future breeding options.

With advancements in DNA and health testing, as a custodian of the breed, all breeders should not breed from a dog or bitch where they are aware of a known health problem. Breeders should be breeding to the betterment of the breed rather than focusing on point scores, ‘selfies’ and how many ribbons can be won.

A.6. Do your research on the breed and the breeder; and don’t be afraid to ask questions. A puppies personality and health are probably the two main factors to consider when looking for a puppy.

A reputable breeder will provide ongoing support to answer any question about the breed. Don’t feel pressured to buy a puppy, it is best to wait for the most suitable one for your situation.

Mariane Newhouse Edelpark

## Edelpark Havanese

Edelpark is the home of happy Havanese, where we have selectively bred quality multi-champion show dogs and loyal family companions for over 25 years. We have been long-time supporters of promoting testing within the breed to improve the standard and enable wiser breeding choices to be made. We have a selective breeding program based upon improving the breed and producing excellence in type, temperament and soundness.

The health of our dogs and our success in the show ring is testament to this.



Photo: EDELPARK OCEAN OBSESSION – Best Baby Puppy of Breed Sydney Royal 2016

CONTACT: MARIANE NEWHOUSE | EDELPARKHAVANESE@GMAIL.COM | WWW.EDELPARK.COM